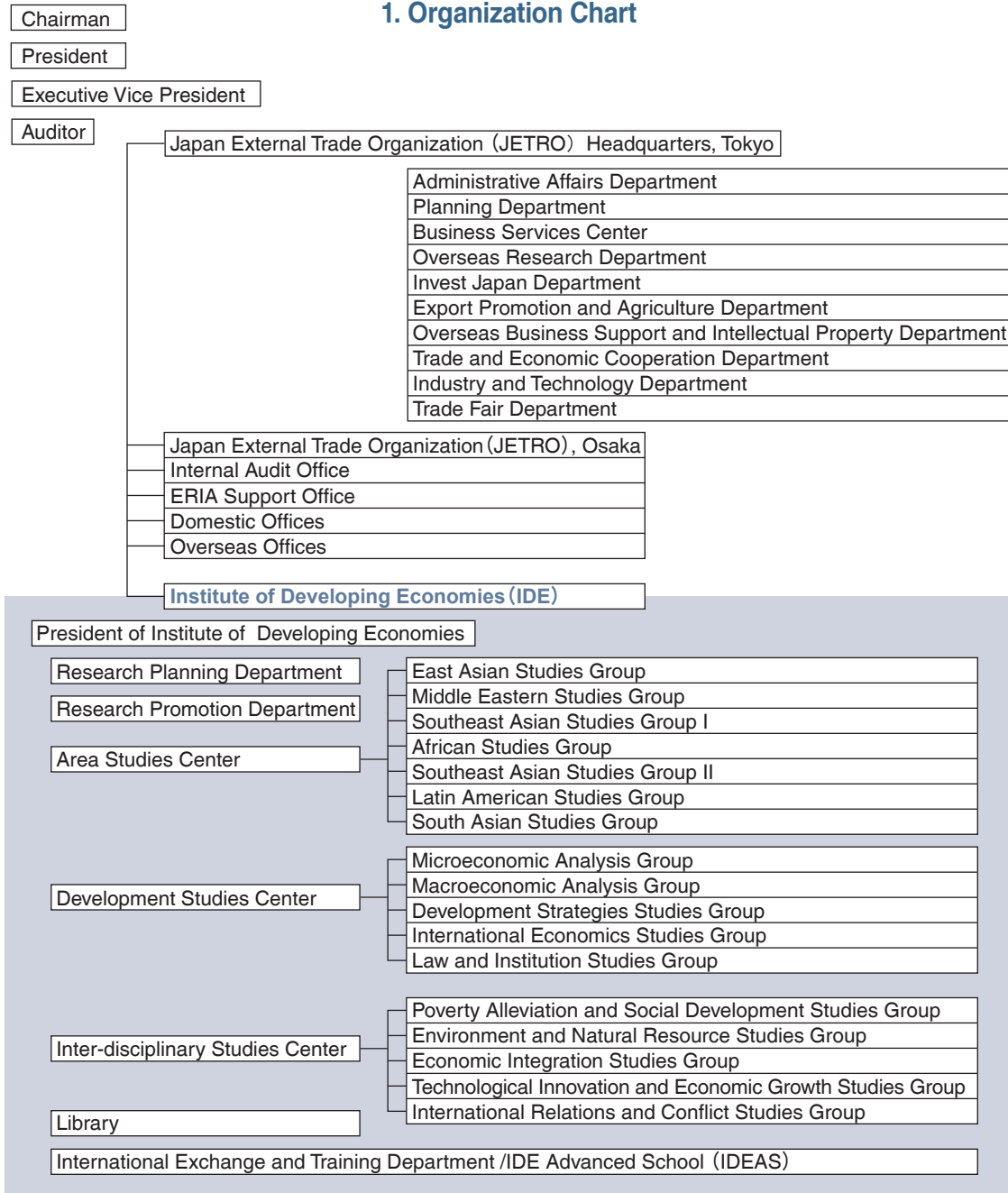


XI. Organization

1. Organization Chart



2. Budget for fiscal year 2008

(unit: ten thousand yen)

《Income》	386,299
Government grant	347,901
other operating income	38,328
《Expenditure》	394,832
Research	47,049
Publications, seminars and lectures	33,672
Expenses for supporting activities towards the establishment of ERIA	8,568
Personel costs and related expenses	301,343
Research of contract basis	4,200

3. Executive Board and Staff

Executive Board

Takashi SHIRAISHI*President of
Institute of Developing
Economies***Toyojiro MARUYA***Executive Vice President*

Staff

Research Planning Department

Chiharu TAMAMURA*Director-General***Susumu IMURA***Director-General, Legal Affairs***Shigeki NOMURA***Director-General, General Affairs***Shigeki MAEDA***Deputy Director-General***Kazuo WATABE***Director in Charge***Kyoko MIURA***Director in Charge***Shigeki OKADA***Director in Charge***Kazumoto IKEDA****Yasue TAKAHASHI****Yoshiaki YOSHIDA**Planning and Coordination
Division**Masanobu SAITO***Director***Satoshi KUBOTA***Deputy Director***Terukazu UCHIKAWA****Rie TAKAHASHI****Nana IZUMI****Tomoharu MOCHIZUKI****Kenichiro MOROYU**Research Management
Division**Nobuyuki NAKAJIMA***Director***Masako KOIZUMI***Deputy Director***Tomoko MIMURA***Deputy Director***Naoko ENDO****Kiyo Tsujimoto****Makiko KURIYAMA****Yasuko WAKABAYASHI**Research Personnel
Division**Takeshi USAMI***Director***Fusao YOSHIMI****Eri SUGIYAMA***Deputy Director***Tomomi YAMASHITA***Deputy Director***Kazuo NAKAYAMA***Deputy Director***Takashi SUGIYAMA****Yoko KANENARI****Koichiro NAGAYA****Yuji ANDO****Atsuko HONDA****Ikuko OKAMOTO**Research Coordination
Office**Kumiko SAKUMOTO***Director***Ritsuko TAKAKUSAGI***Deputy Director***Manami HANDA***Deputy Director***Takeo MASUDA****Naoyuki TAJIMA**Research Promotion
Department**Hiroshi SATO***Director-General***Kumiko IZUMISAWA***Deputy Director-General***Yasuhiro NIMURA***Deputy Director-General***Takayuki SANADA***Director in Charge***Fusako HIRATA***Director in Charge*

External Relations Division

Junichi NITTA*Director***Kayo HOKINOUE***Deputy Director***Yoko SATO****Yasuko KONO****Miwako OKAMOTO****Hiroyuki KOBAYASHI**

**Publications Planning and
Editorial Division**

Masahiro OKADA
Director

Koji MATSUBARA
Deputy Director

Mitsuru HANDA

Mami ISHIGAKI

Miho SHIMIZU

Yoshihide IWASA

Yukio SAITO

Mayumi SAWADA

Eiichiro SHIMIZU

**Information Systems
Management Division**

Kumiko IZUMISAWA
Director

Hisaki SHIRAMIZU
Deputy Director

Masato KUROKO
Deputy Director

Area Studies Center

Katsumi HIRANO
Director-General

Taeko HOSHINO
Deputy Director-General

Satoru OKUDA
Director in Charge

Naoko AMAKAWA
Director in Charge

Takeshi KAWANAKA
Director in Charge

East Asian Studies Group

Mariko WATANABE
Director

Masahiko NAKAGAWA

Moriki OHARA
Deputy Director

Hideki HIRAIZUMI

Norihiro SASAKI

Nao ISHIZAKI

Haruka MATSUMOTO

Takayuki TAKEUCHI

Ke DING

Southeast Asian Studies Group I

Shinichi SHIGETOMI
Director

Masashi NAKAMURA
Deputy Director

Koichi KAWAMURA

Yurika SUZUKI

Nobuhiro AIZAWA

Southeast Asian Studies Group II

Toshihiro KUDO
Director

Mai FUJITA
Deputy Director

Minoru TERAMOTO

Norihiko YAMADA

Hisaki KONO

Emi KOJIN

Yoshihiro NAKANISHI

South Asian Studies Group

Norio KONDO
Director

Yuko TSUJITA

Hitoshi OTA

Takeshi INOUE

Kazuki MINATO

Middle Eastern Studies Group

Yasushi HAZAMA
Director

Yoko IWASAKI

Kaoru MURAKAMI

Natsuko OKA

Ichiki TSUCHIYA

Jun SAITO

African Studies Group

Katsuya MOCHIZUKI
Director

Yuka KODAMA

Akira SATO
Deputy Director

Eiichi Yoshida

Takahiro FUKUNISHI

Kumiko MAKINO

Chizuko SATO

Latin American Studies Group

Koichi USAMI
Director

Akio YONEMURA

Aki SAKAGUCHI
Deputy Director

Kanako YAMAOKA

Tatsuya SHIMIZU

Ryohei KONTA

Naokatsu UETANI

Development Studies Center

Daisuke HIRATSUKA

Director-General

Hiromichi OZEKI
Director in Charge

Hiroki NOGAMI
Director in Charge

Masami ISHIDA
Director in Charge

Microeconomic Analysis Group

Satoshi INOMATA
Director

Hiroshi KUWAMORI
Deputy Director

Yoko UCHIDA

Macroeconomic Analysis Group

Jinichi UEMURA
Director

Hitoshi SATO

Kazunari TSUKADA

Kazushi TAKAHASHI

Yosuke NODA

**International Economics
Studies Group**

Kozo KUNIMUNE
Director

Hisayuki MITSUO
Deputy Director

Hisao YOSHINO

Miki HAMADA

Koji KUBO

Masahiro KODAMA

Kazuhiko OYAMADA

Toshikazu YAMADA

**Development Strategies
Studies Group**

Ikuo KUROIWA
Director

Seiro ITO
Deputy Director

Chie KASHIWABARA

Hisatoshi HOKEN

Kensuke KUBO

Keola Souknilanh

Koichiro KIMURA

**Law and Institution Studies
Group**

Masayuki KOBAYASHI
Director

Futaba ISHIZUKA

Hajime SATO

Inter-disciplinary Studies Center

Junko MIZUNO
Director-General

Yukihito SATO
Director in Charge

**Poverty Alleviation and Social
Development Studies Group**

Tatsufumi YAMAGATA
Director

Soya MORI
Deputy Director

Mitsuki SHIOTA

Mari NAKAMURA

Hiroko UCHIMURA

Takayuki HIGASHIKATA

Yoko ASUYAMA

**Environment and Natural
Resource Studies Group**

Michikazu KOJIMA
Director

Tadayoshi TERAO

Kenji OTSUKA
Deputy Director
Tsuruyo FUNATSU

Etsuyo MICHIDA

Vella Atienza

**Economic Integration Studies
Group**

Koji NISHIKIMI
Director

Satoru KUMAGAI
Deputy Director

Ikumo ISONO

Toshitaka GOKAN

Tomohiro MACHIKITA

Kazunobu HAYAKAWA

**Technological Innovation and
Economic Growth Studies Group**

Makoto ABE
Director

Momoko KAWAKAMI
Deputy Director

Hiroshi IKEGAMI

**International Relations and
Conflict Studies Group**

Junko MIZUNO
Director

Miwa TSUDA
Deputy Director

Hitoshi SUZUKI
Deputy Director

Akiko YANAI

Sanae SUZUKI

Library

Sadashi FUKUDA
Chief Librarian

Muneo TAKAHASHI*Director in Charge***Planning and Coordination
Division****Tomoko MURAI***Director***Miho YOKOSE****Shuji KANO****Mayumi KISHI****Kanako SAKAI****Processing Division****Hiroyuki NIKAI***Director***Shigeko SASAKI****Michiko ISHII****Shigeru HIGASHIKAWA****Yuko SAWADA***Deputy Director***Tsuguo KUDO****Information Service Division****Erika ITO***Director***Fusako SUGAWARA****Yoji OGINO****Shigetaka KAWADA***Deputy Director***International Exchange and
Training Department****Masako Osuna***Director-General***Etsuko SUZUKI***Director in Charge***Shozo SAKATA***Director in Charge***Takao TSUNEISHI****Akihiko UENO***Deputy Director***Yasuyo SAKAGUCHI***Chief***Sakie MORI****Tetsuo OKUBO****Yuzuru MORIWAKI****ERIA Support Office****Daisuke HIRATSUKA***Director-General***Kenji KOMINE***Director***Yumiko ISHIKAWA***Deputy Director***Noburu YOSHIDA****Bangkok Research Centre,
JETRO****Mitsuhiro KAGAMI***President***Minoru MAKISHIMA***Deputy Director-General***Mitsunori YOKOYAMA***Deputy Director-General***Shuji UCHIKAWA****Yasushi UEKI****Senior Research Fellows Sent
Abroad****Ryusuke TAKASHIMA***(China)***Naoyuki SAKUMOTO***(Indonesia)***Hideki HIRAIZUMI***(China)***Kaoru MURAKAMI***(U.S.A.)***Shinya IMAIZUMI***(U.S.A.)***Etsuyo ARAI***(Sri Lanka)***Koichiro KITANO***(Chile)***Mayumi MURAYAMA***(India)***Ikuo KUROIWA***(Singapore)***Mariko WATANABE***(China)***Research Fellows Sent Abroad****Koji KUBO***(Myanmar)***Yoko ASUYAMA***(U.S.A.)***Yoshie SHIMANE***(India)***Naomi HATSUKANO***(Cambodia)***Maki AOKI***(Thailand)***Momoe MAKINO***(U.S.A.)***Miwa YAMADA***(Thailand)***Nanae YAMADA***(China)***Yuichi WATANABE***(U.S.A.)***Bo MENG***(France)***Mami YAMAGUCHI***(China)***Staff who left during Fiscal
2008****Chinami YAMAJI****Hidetoshi NISHIMURA****Azusa HARASHIMA**

Daiki KASUGAHARA

Kenichi IMAI

Noyuki SAKUMOTO

Tadahiro JUJYO

Toshikazu YAMADA

Yuzuru MORIWAKI

Tamotsu SHIMIZU

Eiichiro SHIMIZU

Tuguo KUDO

Hisaya ODA

Jiro OKAMOTO

Maho KATO

Rika NAKAGAWA